

WIRE ROPE ATTACHMENTS



OPEN SPELTER SOCKET

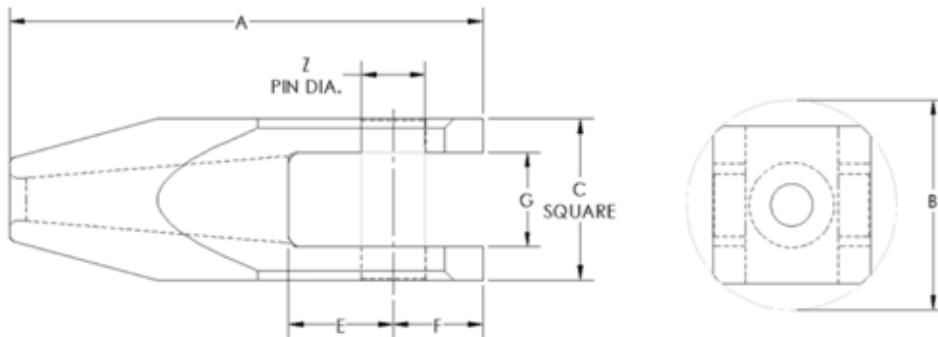
Standard dimensions are shown below. Custom sizing available upon request.
Contact: attachments@northernstrands.com

Factor of safety for all Open Spelter Sockets is 10:1.

Options:

- Threaded Pin (Round or Flat Head)
- Quick Release Pin

*Socket Identification Number also represents rope size



SOCKET IDENTIFICATION NUMBER*	WORKING LOAD LIMIT (LBS)	A	B	C	E	F	G	Z	APPROXIMATE WEIGHT [LBS]
SJ 1.000	20,000	13.375	6.375	4.750	3.063	2.563	2.844	1.875	40.0
SJ 1.125	25,000	15.000	6.375	4.750	3.375	2.875	2.844	1.875	45.0
SJ 1.250	30,000	16.500	7.750	5.750	3.688	3.188	3.469	2.313	75.0
SJ 1.375	35,000	18.250	7.750	5.750	4.125	3.500	3.469	2.313	80.0
SJ 1.500	40,000	19.750	9.000	6.875	4.375	3.750	4.063	2.750	125.0
SJ 1.625	50,000	21.500	9.000	6.875	4.750	4.125	4.063	2.750	135.0
SJ 1.750	60,000	23.125	10.500	7.875	5.125	4.375	4.625	3.125	190.0
SJ 1.875	70,000	24.750	10.500	7.875	5.438	4.688	4.625	3.125	205.0
SJ 2.000	80,000	26.250	11.500	8.875	5.750	5.000	5.219	3.563	275.0
SJ 2.125	86,000	28.000	11.500	8.875	6.188	5.313	5.219	3.563	295.0
SJ 2.250	95,000	29.875	12.750	9.875	6.500	5.625	5.781	4.000	390.0