

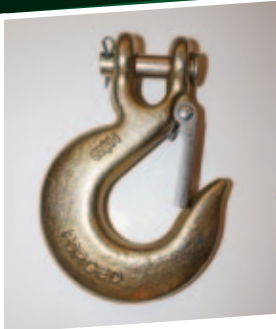
TRANSPORT CHAIN AND ACCESSORIES



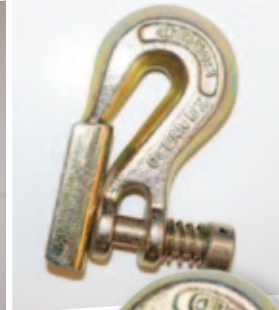
Transport Chain, Grade 70

1/4", 5/16", 3/8", 1/2"

- High tensile carbon steel. Heat treated.
- Minimum Ultimate load is 4 times the Working Load Limit. Design factor of 4 to 1.
- Gold dichromate finish.
- Meets ASTM & NACM standards.
- Available in custom lengths.



Grade 70 grab and slip hooks



Load Binders Ratchet and Lever Style

5/16" - 3/8",
3/8" - 1/2"

Did you know?

Grade 70 transport chain assemblies have distinct advantages over Grade 43 assemblies. Grade 70 assemblies have a higher load rating and are smaller in size. This makes Grade 70 assemblies easier to work with, lighter and makes for convenient storage. Who benefits from these advantages? Anyone who needs to tow, haul, lash, or tie down a load."

SASKATOON

3235 Millar Avenue, Saskatoon SK S7K 5Y3 FAX: (306) 249-4374
Ph: (306) 242-7073 Toll Free: 1-800-242-7073

REGINA

125 Henderson Drive, Regina SK S4N 5W4 FAX: (306) 352-9112
Ph: (306) 352-7073 Toll Free: 1-800-242-7073